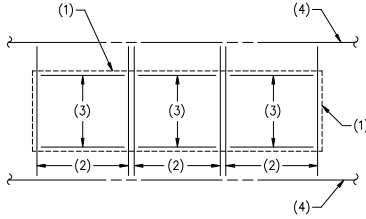


NOTES:

1. OUTLINE OF MECH. UNIT.
2. MAIN RAIL.
3. CROSS RAIL.
4. ROOF FRAMING MEMBER BY OTHERS.

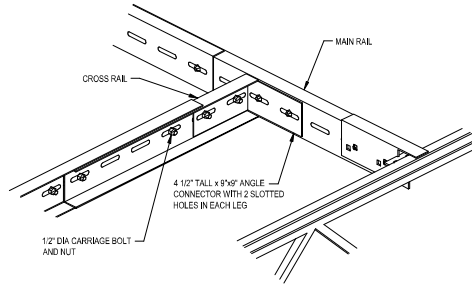


MULTIPLE QUICKFRAMES WITHIN SAME BAY SUPPORTING RTU - COMPLETE FRAMES MUST BE INSTALLED. SHARING RAILS IS NOT PERMITTED.

FOR A CONSERVATIVE CAPACITY, USE "LIGHT MACHINERY" COLUMN OF LOAD TABLE MULTIPLIED BY NUMBER OF COMPLETE FRAMES.

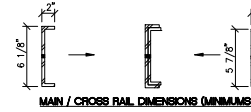
NOTE: IF THE CONSERVATIVE LOAD CAPACITY CALCULATION FROM THIS DETAIL IS NOT SUFFICIENT FOR A SPECIFIC LOCATION, CONTACT QUICKFRAMES FOR A SITE SPECIFIC DESIGN.

**05** QUICKFRAMES ROOF FRAME AT MULTIPLE OPENINGS NO SCALE

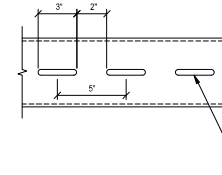


NOTE: SEE NOTES ON FIRST PAGE FOR LOAD RESTRICTIONS.

**03** ANGLE CONNECTOR DETAIL NO SCALE

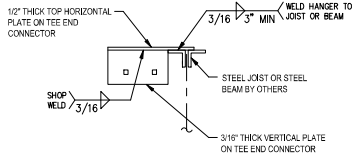


MAIN / CROSS RAIL DIMENSIONS (MINIMUMS)

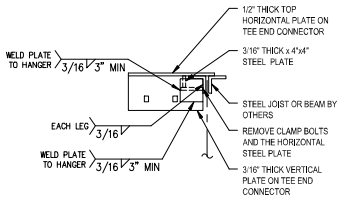


9/16" SLOTTED HOLE

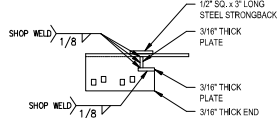
**01** MAIN/CROSS RAIL NO SCALE



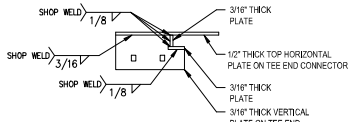
**C** TOP WELDED TEE END CONNECTOR OPTION



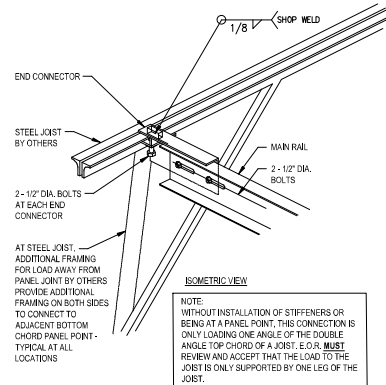
**D** WELDED TEE SHEAR PLATE END CONNECTOR OPTION



**A** BOLTED STANDARD END CONNECTOR WITH STRONGBACK



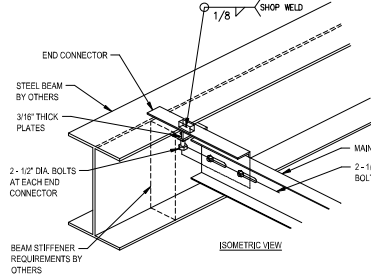
**B** BOLTED TEE END CONNECTOR OPTION



ISOMETRIC VIEW

NOTE: WITHOUT INSTALLATION OF STEFFENERS OR BENDS AT A PANEL POINT, THIS CONNECTION IS ONLY LOADING ONE ANGLE OF THE DOUBLE ANGLE TOP CHORD OF A JOIST. E.O.R. MUST REVIEW AND ACCEPT THAT THE LOAD TO THE JOIST IS ONLY SUPPORTED BY ONE LEG OF THE JOIST.

**02** DECK CONNECTION TO MAIN/CROSS RAILS NO SCALE



ISOMETRIC VIEW

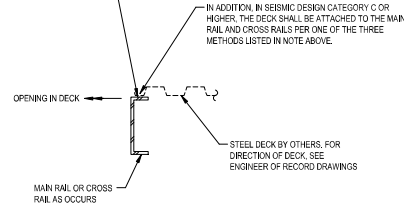
**04** END CONNECTOR DETAIL

**04A** AS NOTED

NO SCALE

FOR THE STABILITY AND DESIGN CAPACITY OF THE QUICKFRAMES ADJUSTABLE FRAME, THE METAL DECK IS NOT REQUIRED TO BE ATTACHED TO THE QUICKFRAMES ADJUSTABLE FRAME, HOWEVER, THE ENGINEER OF RECORD FOR THE BUILDING MUST CONFIRM WHETHER OR NOT THE DECK REQUIRES ANY ATTACHMENT OF THE DECK TO THE QUICKFRAMES ADJUSTABLE FRAME. THE FOLLOWING ARE THREE ACCEPTABLE METHODS:

- MULTI XAJ SHOTFRMS OR APPROVED EQUAL ARE AN ACCEPTABLE CONNECTION IN ADDITION, ICC APPROVED SCREWS ARE AN ACCEPTABLE CONNECTION.
- IF THE CONNECTION AREA IS ACCESSIBLE TO PERFORM PUDDLE WELDS, PUDDLE WELDS FROM THE DECK TO THE QUICKFRAMES ADJUSTABLE FRAME ARE AN ACCEPTABLE CONNECTION.
- IF THE METAL DECK IS AT LEAST A MINIMUM OF 20 GAGE IN THICKNESS, 1/8" FILLET WELDS STITCHED ALONG THE BACKSIDE OF THE QUICKFRAMES ADJUSTABLE FRAME SECTION (AT THE BEND FROM THE FLANGE TO THE WEB) IS AN ACCEPTABLE CONNECTION.



IN ADDITION, IN SEISMIC DESIGN CATEGORY C OR HIGHER, THE DECK SHALL BE ATTACHED TO THE MAIN RAIL AND CROSS RAILS PER ONE OF THE THREE METHODS LISTED IN NOTE ABOVE.

STEEL DECK BY OTHERS, FOR DIRECTION OF DECK, SEE ENGINEER OF RECORD DRAWINGS

STANDARD SHEET REVISION DATE: 11/23/22

THIS SHEET IS INTENDED FOR GENERAL USE ONLY AND IS NOT CONSIDERED SITE SPECIFIC UNLESS ADDRESS OF SITE IS SHOWN IN TITLE BLOCK AND THE STRUCTURAL ENGINEER OF RECORD'S SEAL IS AFFIXED WITH WRITTEN SIGNATURE.

XXX  
XXX  
XXX

**QUICKFRAMES**

QUICKFRAMES USA, LLC  
710 W. Broadway Rd., Suite 503 Mesa, Arizona 85210  
Office: 480.481.1500 Sales: 480.666.1575  
Website: www.quickframes.com  
Email: sales@quickframes.com

JOB NUMBER: 22-0120-XXX		DRAWN BY: XXX		CHECKED BY: XXX	
DATE: XX/XX/2022		SCALE: N.T.S.		SHEET: SIA	

SEAL  
THIS SHEET IS INTENDED FOR PRELIMINARY USE ONLY AND IS NOT FOR PERMIT OR CONSTRUCTION UNLESS ADDRESS OF SITE IS SHOWN IN TITLE BLOCK AND THE STRUCTURAL ENGINEER OF RECORD'S SEAL IS AFFIXED WITH WRITTEN SIGNATURE.